

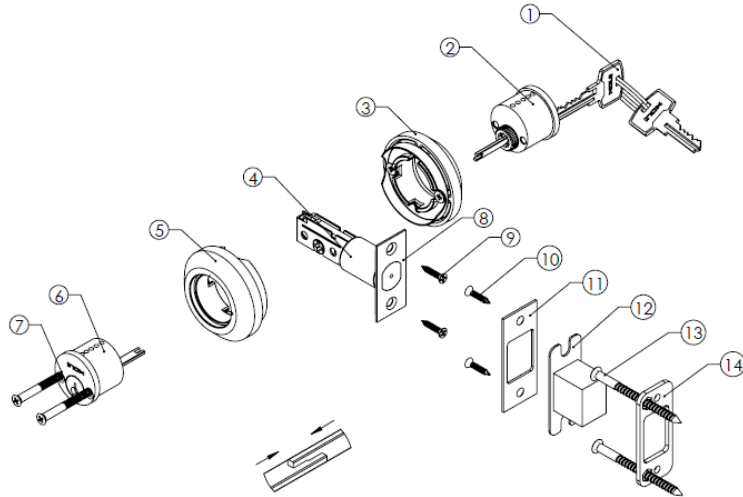
RD120/SD320 Double Cylinder Deadbolt

Installation Instructions (PM-IS1602-V1012)

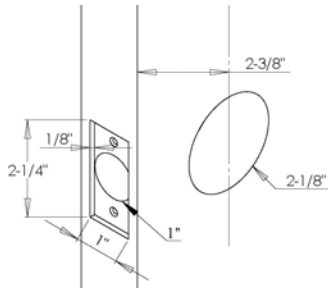


Parts List

1. Keys
2. Cylinder
3. Escutcheons
4. Bolt
5. Escutcheons
6. Cylinder with screw hole
7. Bolts
8. Face plate for Bolt
9. Screws for Face plate
10. Screws for Strike Plate
11. Strike Plate
12. Dust Proof Box
13. Reinforcer Screws
14. Reinforcer

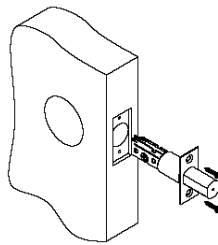


1. Prepare Door



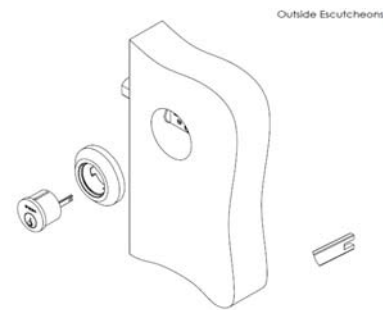
1. Mark door with enclosed template.
2. Drill 2-1/8" hole through door face.
3. Drill 1" hole from edge of door.
4. Mortise edge of door for bolt front by using bolt faceplate as a template.

2. Install Bolt



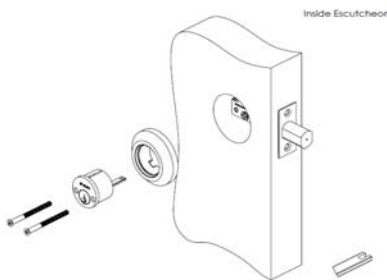
1. Install bolt in to 1" hole.
2. Secure with wood screws.

3. Install Outside Escutcheon & Cylinder



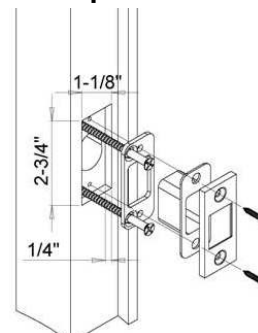
1. Place cylinder and outside escutcheons onto door with cylinder tailpiece going through the cam slot of the bolt.
* The tailpiece need to be Vertical

4. Install Inside Escutcheon & Cylinder



1. Place inside mounting escutcheon in position
2. **Set Cylinder Tailpiece:**
* **For Left Handed Door, turn the tailpiece of cylinder all the way to the right and keep it Horizon.**
* **For Right Handed Door, turn the tailpiece of cylinder all the way to the left and keep it Horizon.**
3. Install cylinder with tailpiece going through the cam slot of the bolt. Fasten the mounting screws into the cylinder, through the escutcheon plate and bolt.

5. Prepare Jamb & Strike



1. Locate the centerline of bolt and mark centerline on jamb.
2. Mark two drill pints 5/16" (8mm), one above and one below centerline.
3. Drill two overlapping 7/8" (22mm) holes 1-1/8" (32mm) deep.
4. Mortise 1/4" (6.2mm) deep.
5. Install reinforcer with 3" (76mm) screws.
6. Install dust proof box and strike plate with screws.